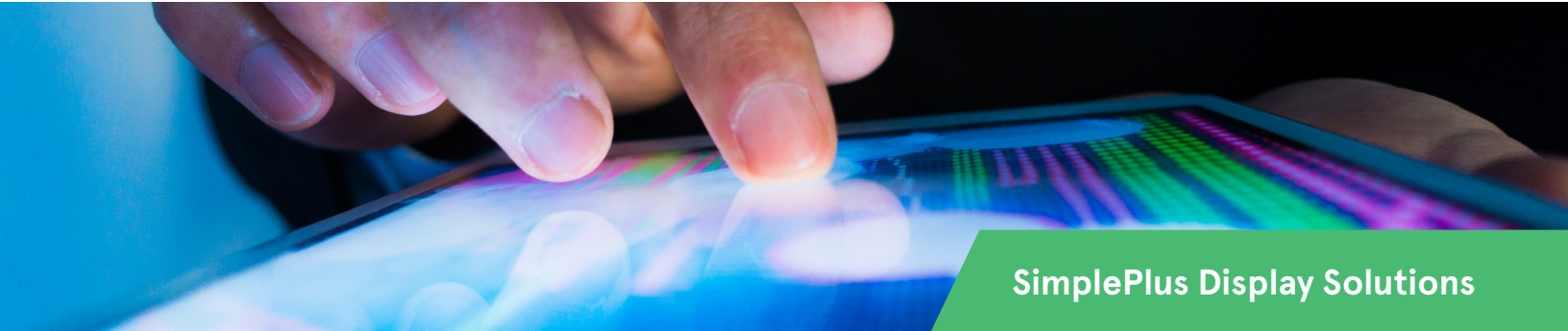


Touch display solutions customized for your application and user experience in half the time

**AVNET**  
**INTEGRATED**

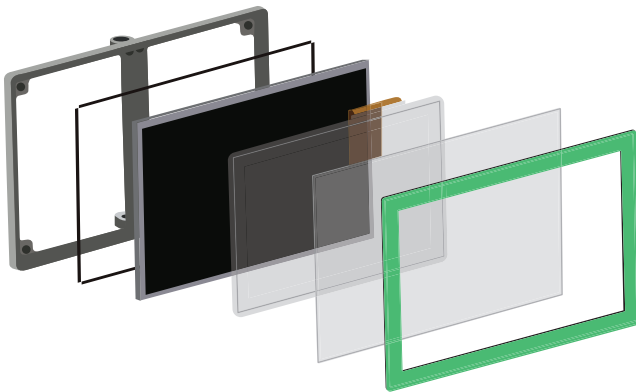


## SimplePlus Display Solutions

### THERE'S A SIMPLER WAY TO A CUSTOM DISPLAY

Designing a custom display solution that meets all user experience, performance and regulatory requirements can be a challenge for any systems engineering team. Delivering that solution on-time and on-budget makes the task even more daunting for product managers.

With Avnet Integrated's expertise and experience, never again must you trade user experience for speed and cost.



### INTRODUCING SIMPLEPLUS

Avnet Integrated's SimplePlus platform provides a new agile approach to display customization by leveraging a range of both off-the-shelf and custom LCD and validated touch assemblies, making your first unit ready for delivery in less than 48-hours.

- Improve user experience with limitless design possibilities
- Cut time-to-market in half with our agile approach
- Reduce risk by leveraging proven designs

Together with your product and engineering teams, our expert touch and display engineers bring you ideas, insights and ultimately innovation.

### A GUIDE FOR YOUR JOURNEY

Our full expertise, experience and capabilities are at your disposal. Our global teams and resources are standing by to ensure your next display project exceeds your customers expectations while keep your team focused on meeting business objectives. Connect with Avnet Integrated today and jumpstart your next display innovation.

### IMPROVE USER EXPERIENCE



**Limitless design possibilities**

Design for user experience, application and environment.

### CUT TIME TO MARKET IN HALF



**Agile and configurable**

Our scale, processes and partnerships deliver custom quickly.

### DELIVER TRUSTED PERFORMANCE



**Tested and proven designs**

Experience and know-how are key to delivering a reliable user experience.

#### Customized for your application:

- Cover lens design
- Mechanical design
- Optical bonding
- Optical and film enhancements
- Surface treatments
- EMI certification guidance
- Grounding design
- False touch prevention
- OS compatibility